

COURSE OFFERING

Control Account Scheduling Using Microsoft Project

LOGISTICS

Duration

16 Hours

Delivery

Instructor-led (in-person or online)

Student PCs are required for hands-on participation and student exercises

Class Size

Up to 15 Students

Prerequisites

A basic familiarity with Microsoft Project is recommended but not required



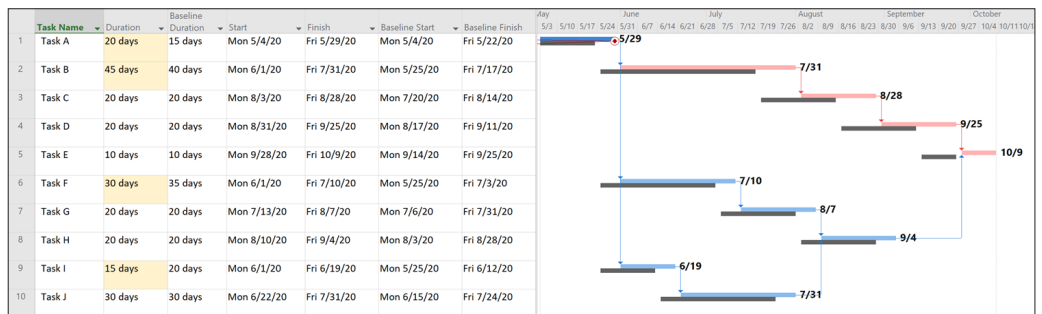
WHY TAKE THIS COURSE?

This course introduces students to building a control account schedule in Microsoft Project or Project Online that will be part of an Integrated Master Schedule (IMS). Topics covered include:

- Configuring options for ideal critical path scheduling calculations
- Structuring the schedule to properly interface with an Earned Value Management System (EVMS)
- Applying Critical Path Method (CPM) best-practices
- Resource-loading, setting a baseline, and applying status

WHO WILL BENEFIT?

Control Account Managers (CAM) or Schedulers building and maintaining Microsoft Project schedules as part of an Integrated Master Schedule or to interface with an EVMS (such as Deltek Cobra, EVMS forProject or similar tool). Anyone who wants to learn how to schedule in Microsoft Project using best practices from the NDIA Planning & Scheduling Excellence Guide (PASEG) or GAO Scheduling Guide.



WHAT WILL I LEARN?

- Use Microsoft Project to develop a control account schedule using good scheduling practices
- Utilize a shared resource pool (Microsoft Project) or enterprise resource pool (Project Online/Server)
- Establish a baseline and assign resources
- Validate schedule integrity using the DCMA 14-point analysis
- Revise the schedule and forecast, with or without actuals
- Incorporate authorized changes to the baseline plan
- Establish an Integrated Master Schedule using Microsoft Project and/or Project Server

Microsoft Partner

PINNACLE TRAINING

Pinnacle offers a wide variety of training options, from introductory classes to advanced project and portfolio management concepts, including Earned Value Management (EVM), as well as vendor partner software training. We specialize in developing customized training solutions to fit your organizational needs.

What sets Pinnacle's training methodology and process apart from others in the industry is an increase in user adoption of processes and tools. Because we understand that providing training relevant to users' roles and responsibilities is critical to ensure successful implementations of EVM, project management tools, and maintaining internal best practices, we can tailor them to your unique business environment. This enables you to put it into practice right away, realizing the ROI much faster than traditional off the shelf courses.

Our team-based workshops are a great way for your project execution team to learn and understand essential project management concepts.

Visit pinnaclemanagement.com/training for more offerings.

ABOUT PINNACLE

Founded in 1993, Pinnacle supports a world-wide client base, through a staff of experienced professionals and a network of strategic partners.

Throughout our history we have successfully delivered hundreds of client engagements, helping our clients across all industries improve their organizational performance and deliver better results.

Specializing in enterprise-wide management systems, our core focuses are Enterprise Project Management (EPM), Integrated Program/Project Management (IPM), Earned Value Management (EVM) and Project Portfolio Management (PPM).

We provide a range of value focused and results driven professional services through our consulting and training, federal, and commercial outsourcing service lines.



Pinnacle Management Systems, Inc.
50 Culpeper Street, Suite 2
Warrenton, VA 20186

Telephone: (888) 975 - 1119
info@pinnaclemanagement.com
www.pinnaclemanagement.com