

# COURSE OFFERING

## Introduction to CPM Scheduling

### LOGISTICS

#### Duration

8 Hours

#### Delivery

Instructor-led (in-person or online)

Course is not hands-on so student PCs are not required

#### Class Size

Up to 15 Students

#### Prerequisites

None

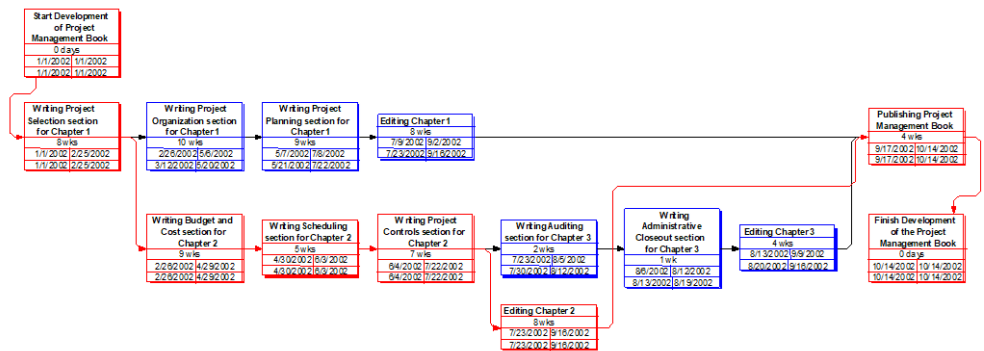
### WHY TAKE THIS COURSE?

This course introduces students to the fundamental concepts of the Critical Path Method (CPM) scheduling technique. This course does not teach any particular software but should be considered a prerequisite to scheduling software training.

### WHO WILL BENEFIT?

Aspiring project managers, project controls analysts, or schedulers.

Project professionals who want to learn more about the scheduling process.



## WHAT WILL I LEARN?

- Create a schedule of sequenced tasks, with durations, using critical path methodology
- Determine free float, total float, and the schedule critical path
- Use resource loading and resource optimization techniques to balance resource availability and schedule demands
- Use the PERT estimating technique
- Apply a disciplined scheduling update process
- Utilize schedule recovery techniques to enhance project success

## PINNACLE TRAINING

Pinnacle offers a wide variety of training options, from introductory classes to advanced project and portfolio management concepts, including Earned Value Management (EVM), as well as vendor partner software training. We specialize in developing customized training solutions to fit your organizational needs.

What sets Pinnacle's training methodology and process apart from others in the industry is an increase in user adoption of processes and tools. Because we understand that providing training relevant to users' roles and responsibilities is critical to ensure successful implementations of EVM, project management tools, and maintaining internal best practices, we can tailor them to your unique business environment. This enables you to put it into practice right away, realizing the ROI much faster than traditional off the shelf courses.

Our team-based workshops are a great way for your project execution team to learn and understand essential project management concepts.

Visit [pinnaclemanagement.com/training](https://pinnaclemanagement.com/training) for more offerings.

## ABOUT PINNACLE

Founded in 1993, Pinnacle supports a world-wide client base, through a staff of experienced professionals and a network of strategic partners.

Throughout our history we have successfully delivered hundreds of client engagements, helping our clients across all industries improve their organizational performance and deliver better results.

Specializing in enterprise-wide management systems, our core focuses are Enterprise Project Management (EPM), Integrated Program/Project Management (IPM), Earned Value Management (EVM) and Project Portfolio Management (PPM).

We provide a range of value focused and results driven professional services through our consulting and training, federal, and commercial outsourcing service lines.



**Pinnacle Management Systems, Inc.**  
50 Culpeper Street, Suite 2  
Warrenton, VA 20186

Telephone: (888) 975 - 1119  
[info@pinnaclemanagement.com](mailto:info@pinnaclemanagement.com)  
[www.pinnaclemanagement.com](https://www.pinnaclemanagement.com)